

Rotary Positive Displacement Blowers

- High pressure, low noise industrial blowers
- Bidirectional rotation
- Horizontal and vertical flow
- High efficiency at high pressure and vacuum
- 1250mbar pressure or 540mbar dry vacuum
- Flow up to 2600 m³/h at 500 mbarg
- Up to 4800 rpm

The Q^X is one of the industry's quietest blowers.

Helical Gearing

Q^X blowers utilize precision helical gears, keyed to the rotor shafts. Helical gears are quieter reducing mechanical noise.

Bearings

All Q^X blowers include double ball bearings on the timing gear end. For additional strength when single roller bearings are used on the drive shaft end of the machine. Utilizing larger bearings, bearing life in excess of 200,000 hours is possible (when using Tuthill PneuLube Oil).

Rotors

Q^X blowers are available in two-lobe or tri-lobe variations. The tri-lobe variation offers reduced pulsation and lower noise levels. The two-lobe variation is ideal for processes with heavy contamination. For vibration free operation all rotors are dynamically balanced. Shafts are integral to the rotors, which prevents loosening over time.

Seals

Q^X blowers are fitted as standard with piston ring labyrinth process/oil seals. Piston ring seals provide high efficiency, long life and reliability. The oil chamber is vented to atmosphere providing oil free air.

Lubrication

Q^X blowers have oil lubrication on both ends with easy to see sight glasses allowing quick maintenance.

Material Specifications

Housing:	Cast iron
End Plates:	Cast iron
End Cover:	Cast iron
Rotors:	Ductile iron
Shafts:	Ductile iron, cast integrally with rotors
Bearings:	GE - Double row ball FE - Single Row Cylindrical
Gears:	Heat treated alloy steel, helical cut
Seals:	Piston Ring Labyrinth

Optional materials and coatings are available upon request.



TUTHILL
Vacuum & Blower Systems

QX-3200

by **Tuthill**

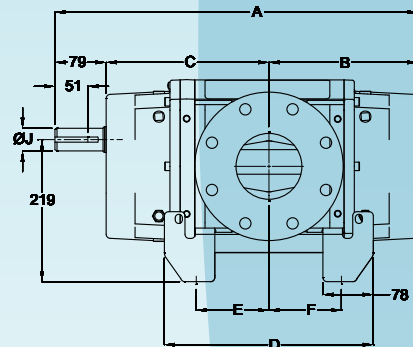
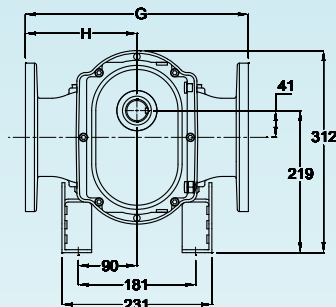
PERFORMANCE TABLES @ 1014mbarA & 20°C

Model	PRESSURE										VACUUM									
	mbarg	500		650		800		1000		1250		-200		-300		-400		-500		
	rpm	m³/h	kW	m³/h	kW	m³/h	kW	m³/h	kW	m³/h	kW	m³/h	kW	m³/h	kW	m³/h	kW	m³/h	kW	
3203	1150	34	1,3									44	0,9	36	1,1	27	1,3			
	1750	71	2,0	65	2,6	59	3,1					80	1,3	71	1,6	95	1,9			
	2950	143	3,5	139	4,5	136	5,2	129	5,4	122	7,8	158	2,2	148	2,7	140	3,2	129	3,8	
	3600	190	4,1	187	5,4	178	6,3	173	8,0	165	9,5	199	2,6	191	3,3	180	3,9	170	4,6	
	4800	268	5,6	262	7,2	255	8,6	248	10,7	241	12,4	277	3,5	277	4,4	258	5,2	248	6,1	
3205	1150	53	2,1	49	2,5							76	1,1	56	1,3	48	1,7			
	1750	105	3,1	109	3,9	104	4,7	93	5,7			133	1,7	112	2,1	112	2,7	93	3,1	
	2950	238	5,3	231	6,5	226	7,8	214	9,5	207	11,2	258	2,8	236	3,7	234	4,5	216	5,4	
	3600	302	6,4	297	0,0	291	9,5	280	11,6	270	13,9	331	3,4	302	4,4	301	5,4	282	6,5	
	4800	428	8,6	421	10,6	413	12,7	403	15,4	392	18,2	450	4,5	425	5,9	416	8,7	404	8,7	
3208	1150	97	2,8	85	3,4							119	1,3	102	1,7	76	2,2			
	1750	192	4,1	180	5,1	168	6,6	153	8,2			212	1,7	195	2,7	183	3,4	153	4,3	
	2950	387	7,1	374	8,7	362	11,0	350	13,8	335	17,0	404	3,1	391	4,5	367	5,8	348	7,2	
	3600	489	8,6	567	0,0	467	13,4	450	16,7	435	20,9	513	3,7	493	5,5	476	7,1	454	8,7	
	4800	686	11,4	737	13,9	658	17,7	644	22,1	629	28,2	705	5,1	695	7,3	671	9,5	642	11,6	

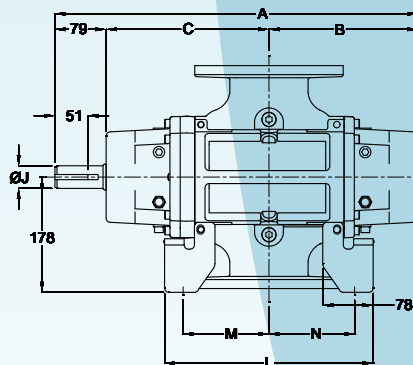
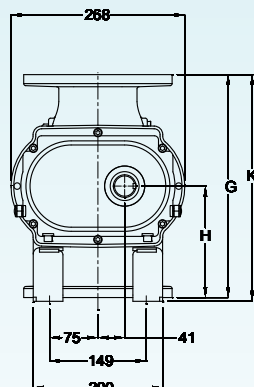
In conjunction with our program of continuous testing and design upgrading, all specifications are subject to change without notice. All data are approximate. Request a quotation for your specific application.

DIMENSIONS

HORIZONTAL FLOW:



VERTICAL FLOW:



All dimensions are shown below in millimetres. Values are approximate and should not be used for construction. Certain dimensions for metric blowers, as well as 64/67 double envelope gasight, differ slightly from those shown below. Certified prints are available through your local Tuthill Vacuum Blower Systems Sales Professional.

Model		A	B	C	D	E	F	G	H	J	K	L	M	N	SHAFT KEY	FLANGE
3203	mm	435	167	188	197	50	49	293	146	35	324	197	70	70	10 x 8mm	DN50; PN10
3205	mm	484	192	212	246	73	75	293	146	35	324	246	94	95	10 x 8mm	DN80; PN10
3208	mm	560	230	251	322	112	112	344	172	35	350	322	132	132	10 x 8mm	DN100; PN10



TUTHILL
Vacuum & Blower Systems

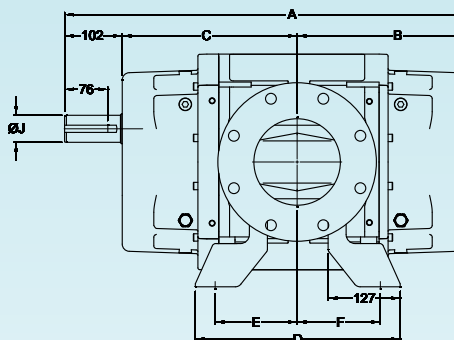
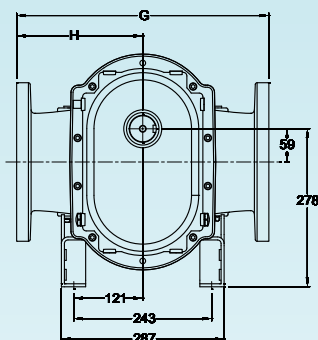
PERFORMANCE TABLES @ 1014mbarA & 20°C

Model	PRESSURE										VACUUM									
	mbarg	500		650		800		1000		1250		-200		-300		-400		-500		
	rpm	m³/h	kW	m³/h	kW	m³/h	kW	m³/h	kW	m³/h	kW	m³/h	kW	m³/h	kW	m³/h	kW	m³/h	kW	
4606	1150	178	5,2	153	6,9	131	8,9					212	2,6	183	3,4	150	4,5			
	1750	353	7,5	314	10,4	306	11,9	280	14,9	255	17,9	382	4,0	353	5,4	314	6,7	272	8,1	
	2750	652	13,4	654	17,5	637	20,9	612	25,7	595	30,9	722	6,7	688	9,2	654	11,6	612	13,7	
	3600	866	16,4	816	21,3	816	25,4	799	31,3	782	38,0	900	8,1	866	11,2	833	12,7	799	16,7	
	4000	968	17,9	934	23,9	917	28,3	900	34,3	883	42,5	1011	9,1	977	12,5	943	15,7	909	18,5	
4610	1150	272	8,2	246	11,9	212	13,4					340	3,7	297	5,2	238	6,7			
	1750	544	11,9	501	16,4	476	19,4	425	23,9	408	28,0	612	5,6	561	7,8	493	10,1	433	12,3	
	2750	1079	20,5	1036	26,1	1011	32,1	968	39,5	934	47,0	1147	9,5	1096	13,4	1036	16,8	977	20,5	
	3600	1351	25,4	1291	13,4	1291	39,5	1257	49,2	1206	57,4	1453	11,6	1376	16,4	1325	20,5	1274	25,0	
	4000	1546	28,3	1495	35,8	1461	43,3	1427	53,7	1393	63,8	1614	12,8	1555	17,9	1504	22,7	1444	27,6	

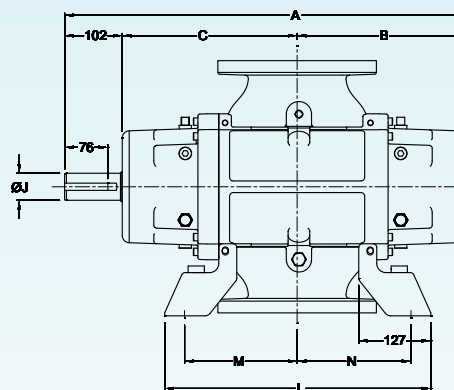
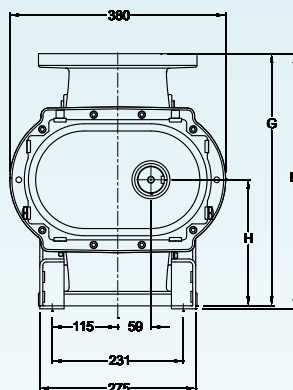
In conjunction with our program of continuous testing and design upgrading, all specifications are subject to change without notice. All data are approximate. Request a quotation for your specific application.

DIMENSIONS

HORIZONTAL FLOW:



VERTICAL FLOW:



All dimensions are shown below in millimetres. Values are approximate and should not be used for construction. Certain dimensions for metric blowers, as well as 64/67 double envelope gaslight, differ slightly from those shown below. Certified prints are available through your local Tuthill Vacuum Blower Systems Sales Professional.

Model		A	B	C	D	E	F	G	H	J	K	L	M	N	SHAFT KEY	FLANGE
4606	mm	602	243	258	368	148	150	445	222	48	450	367	148	150	14 x 9 mm	DN100; PN10
4610	mm	704	294	308	469	199	201	445	222	48	450	469	198	201	14 x 9 mm	DN150; PN10

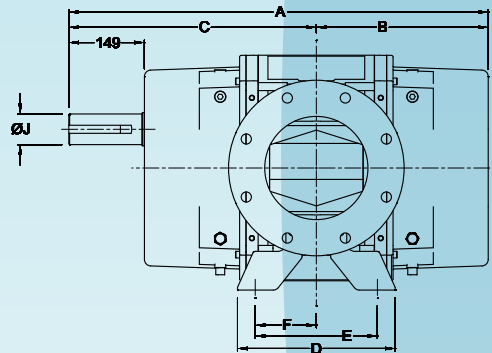
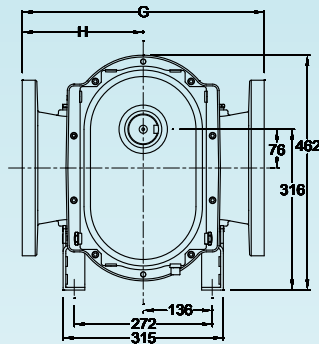
PERFORMANCE TABLES @ 1014mbarA & 20°C

Model	PRESSURE										VACUUM									
	mbarg	500		650		800		1000		1250		-200		-300		-400		-500		
	rpm	m³/h	kW	m³/h	kW	m³/h	kW	m³/h	kW	m³/h	kW	m³/h	kW	m³/h	kW	m³/h	kW	m³/h	kW	
6009	1150	467	9,7	425	13,4	391	16,4					527	4,8	484	6,7	425	8,9			
	1750	833	16,4	790	20,9	756	24,6	722	31,3	680	38,8	900	7,5	841	10,4	714	13,4	731	16,4	
	2350	1215	20,1	1164	27,6	1130	32,8	1087	42,5	1045	52,2	1266	10,1	1215	14,2	1164	18,3	1096	22,0	
	2950	1572	25,7	1546	35,0	1495	41,8	1470	52,9	1444	66,4	1640	12,3	1589	17,5	1529	22,7	1470	28,0	
6015	1150	790	16,4	714	21,6	646	26,8					883	8,9	799	11,2	697	14,2			
	1750	1393	25,7	1325	33,6	1266	41,0	1215	50,7	1053	62,6	1495	11,9	1410	16,8	1325	21,6	1240	26,8	
	2350	2005	35,0	1937	45,5	1886	54,8	1818	68,6	1741	83,5	2107	16,0	2107	22,0	1937	29,1	1843	35,8	
	2950	2616	44,0	2566	26,8	2498	69,7	2430	85,0	2353	104,4	2718	20,1	2633	28,3	2549	36,5	2430	44,7	

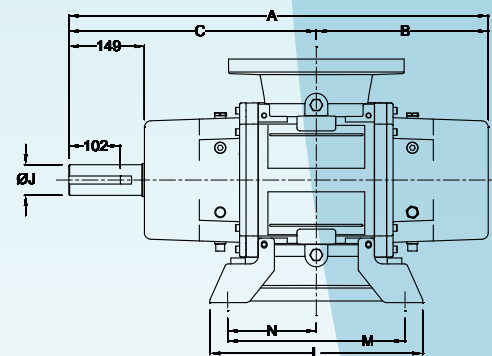
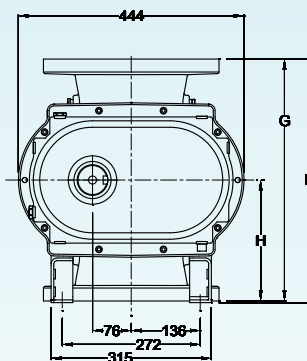
In conjunction with our program of continuous testing and design upgrading, all specifications are subject to change without notice. All data are approximate. Request a quotation for your specific application.

DIMENSIONS

HORIZONTAL FLOW:



VERTICAL FLOW:



All dimensions are shown below in millimetres. Values are approximate and should not be used for construction. Certain dimensions for metric blowers, as well as 64/67 double envelope gastight, differ slightly from those shown below. Certified prints are available through your local Tuthill Vacuum Blower Systems Sales Professional.

Model		A	B	C	D	E	F	G	H	J	K	L	M	N	SHAFT KEY	FLANGE
6009	mm	826	338	487	310	241	120	476	238	60	479	419	350	175	18 x 11mm	DN200; PN10
6015	mm	978	415	563	463	393	197	476	238	60	479	572	502	251	18 x 11mm	DN200; PN10